



CAPSTREND

Daily Market Perspective

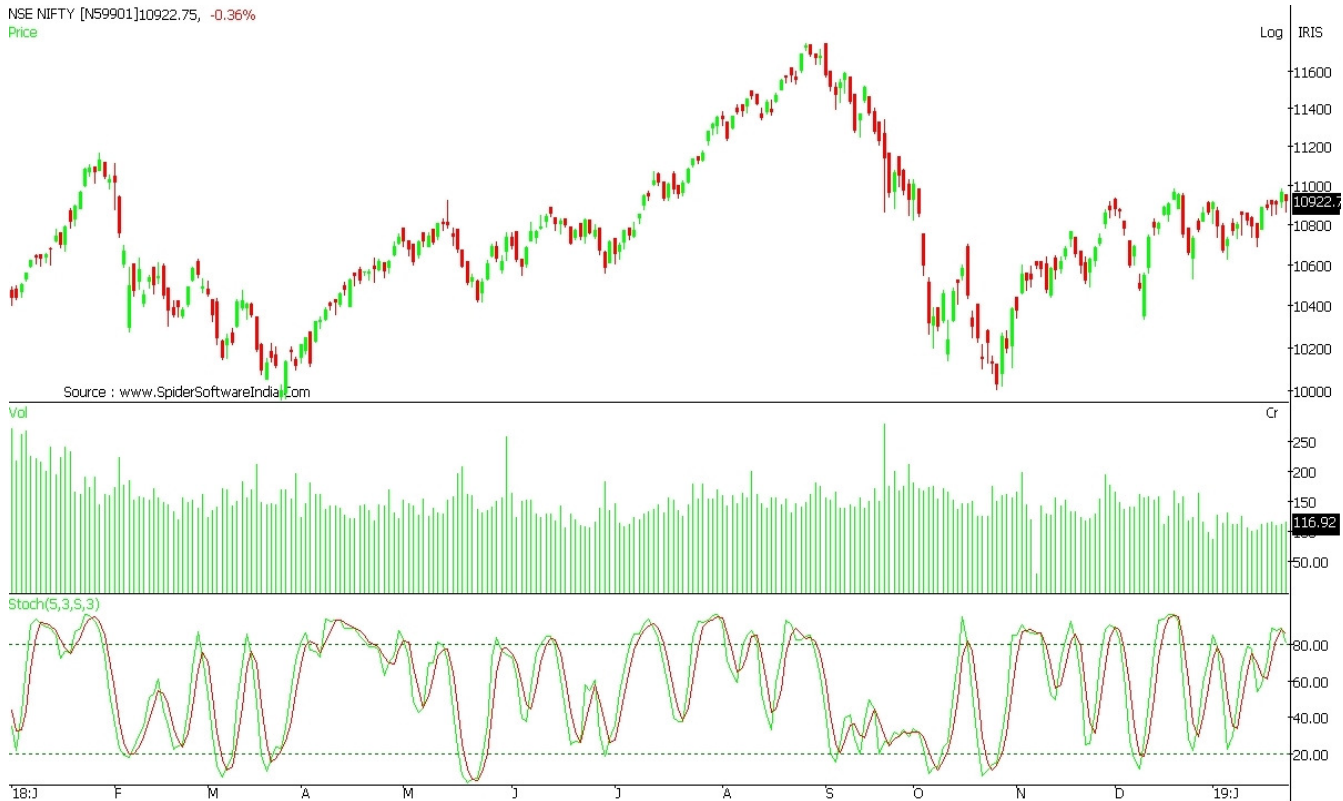


23 January 2019

www.capstocksiindia.com

CNXNIFTY

NSE NIFTY [N59901]10922.75, -0.36%
Price



Yesterday nifty seen a small gap down opening at 10950 levels and selling continued till noon which dragged nifty around 10860 levels and then it managed to raise from day's low and ended at 10923 which is near by previous day open level. Over all nifty traded in very small region for entire day. On option chain front, 10900 put option seen a large number of unwinding indicating a immediate bearishness of market. On larger time frame 10750 & 11000 will act as support and resistance and expected to be in range bound. At the closing bell, the BSE Sensex stood lower by 134 points (down 0.4%) and the NSE Nifty closed down by 39 points (down 0.4%). The BSE Mid Cap index ended the day down by 0.1% while the BSE Small Cap index ended the day down by 0.5%. Sectoral indices ended on a mixed note with stocks in the healthcare sector and realty sector witnessing buying interest while metal stocks and telecom stocks witnessed selling pressure. The market breadth, indicating the overall health of the market, was negative. On NSE, 543 shares rose and 1143 shares fell. A total of 88 shares were unchanged. Resistance 10959-10996-11046-11081-11148 and Support a 10874-10826-10794-10741-10683. Today market expected to open in flat note.

	R1 10996	
	R2 11046	
	R3 11148	
	S1 10826	
	S2 10794	
	S3 10741	

INDEX WATCH**VOLUME**

Index	Close Value	Change	Change%
Sensex	36444.64	-134.32	-0.37
Nifty 50	10922.75	-39.10	-0.36
Nifty Bank	27482.25	-51.35	-0.19
Nifty IT	14962.60	-3.80	-0.03

Market Segment	in Cr
NSE CASH	31359
NSE F&O	555204
BSE	3213
TOTAL	589776

GLOBAL MARKET**FII Net**

Index	Close Value	Change	Change%
DOW	24404.48	-301.87	-1.22
NASDAQ	7020.36	-136.87	-1.91
Nikkei	20631.54	-8.63	-0.04
HangSeng	27064.68	+59.68	+0.22

FII Net Investments	in Cr
22 Jan 2019	-78
21 Jan 2019	-299
18 Jan 2019	-124
17 Jan 2019	+842
16 Jan 2019	-90

*Provisional Data

CURRENCY FUTURE

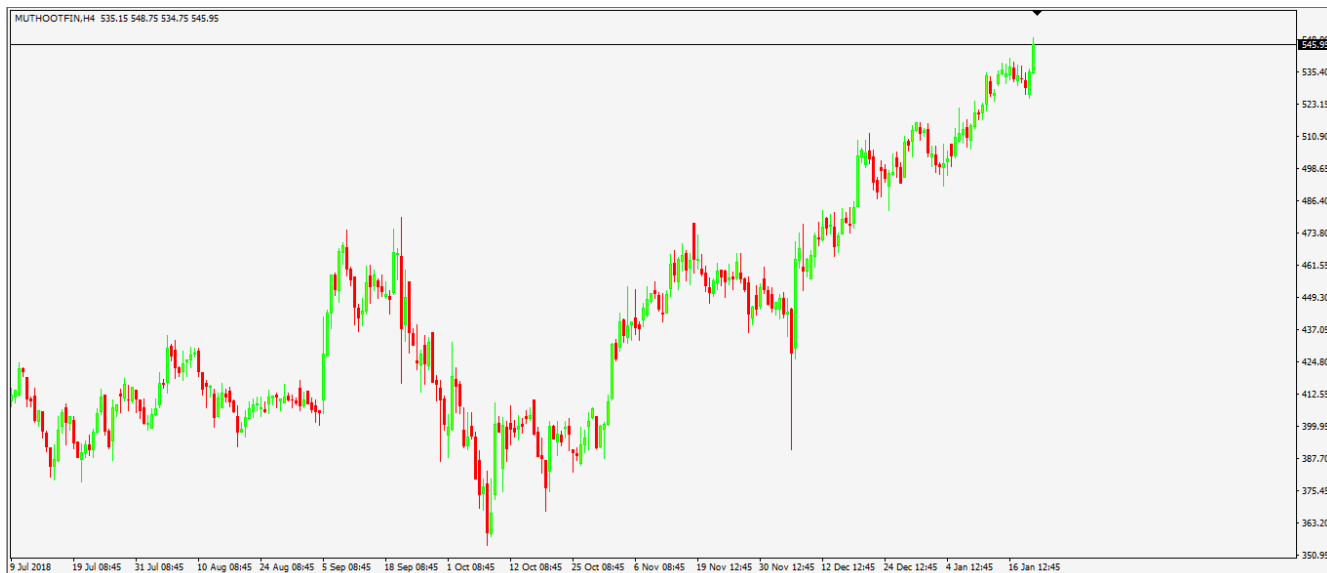
Currency	Open	Close	RBI reference rate
1 USD	71.5525	71.4850	71.3761
1 GBP	91.6900	92.3150	91.8963
1 EUR	81.0575	81.2650	81.0438
100 JPY	65.1475	65.3500	65.2300

Crude Oil

61.49	-0.01	0.02
--------------	--------------	-------------

NIFTY GAINERS			NIFTY LOSERS		
Company	Price	Chg (%)	Company	Price	Chg (%)
SUNPHARMA	417.4	4.8	VEDL	191.2	-3.65
WIPRO	348.25	3.09	TATASTEEL	456.3	-3.26
TITAN	981.9	1.99	M&M	707.75	-3.09
KOTAKBANK	1291.5	1.89	ZEEL	424.5	-2.78
DRREDDY	2639.2	1.52	JSWSTEEL	277.5	-2.49

Stocks Technical View



This is a chart of Muthoot fin. The stock is trading in an uptrend and is expected to hit the target 575 in a short period of time.

MARKET NEWS

Results on Wednesday: ITC, Bharti Infratel, InterGlobe Aviation, Vijaya Bank, Premier Explosives, Indoco Remedies, Raymond, Navin Fluorine International, Sintex Plastics Technology, Mafatlal Finance, Hathway Cable & Datacom, Dishman Carbogen Amcis, Orient Paper & Industries, Radico Khaitan, Tejas Networks, BASF India, Essel Propack, Wendt (India), Vijaya Bank, Ujjivan Financial Services, Oriental Hotels, Mafatlal Finance, Pidilite Industries, Can Fin Homes, Everest Industries, JM Financial, DB Corp, United Spirits, Bank of Maharashtra, Tanla Solutions, Kewal Kiran Clothing, Thirumalai Chemicals, Reliance Communications, Atlanta.

Reliance Industries: Competition Commission of India approves acquiring stake in Den Networks and Hathway Cables.

ICICI Prudential Life Insurance Company Q3: Profit falls to Rs 296.77 crore versus Rs 452.10 crore; new premium income rises to Rs 7,483 crore versus Rs 6,795 crore YoY.

Genus Power Infrastructures Q3: Profit jumps to Rs 23 crore versus Rs 13.2 crore; revenue rises to Rs 292 crore versus Rs 200 crore YoY.

HDFC Standard Life Insurance Q3: Profit rises 18.5 percent to Rs 245.63 crore; first year premium increases 4.1 percent to Rs 1,252.34 crore YoY.

RS Software Q3: Loss at Rs 6.5 crore versus loss at Rs 7.2 crore; revenue rises to Rs 17 crore versus Rs 14.7 crore QoQ.

Syngene International Q3: Profit rises to Rs 87 crore versus Rs 82 crore; revenue increases to Rs 467.1 crore versus Rs 387.7 crore YoY.

Oberoi Realty Q3: Profit rises to Rs 138 crore versus Rs 120.2 crore; revenue jumps to Rs 528.6 crore versus Rs 356.2 crore YoY.

Equity Pivot for Nifty Stocks

SYMBOL	CLOSE	R3	R2	R1	Pivot	S1	S2	S3
ADANIPTS	390.60	406.00	398.40	394.50	390.80	386.90	383.20	375.60
ASIANPAINT	1406.95	1518.35	1461.55	1434.25	1404.75	1377.45	1347.95	1291.15
AXISBANK	661.60	679.18	669.43	665.52	659.68	655.77	649.93	640.18
BAJAJ-AUTO	2688.35	2767.62	2722.72	2705.53	2677.82	2660.63	2632.92	2588.02
BAJAJFINSV	6435.55	6604.97	6507.92	6471.73	6410.87	6374.68	6313.82	6216.77
BAJFINANCE	2621.90	2730.63	2670.63	2646.27	2610.63	2586.27	2550.63	2490.63
BHARTIARTL	304.85	327.27	316.72	310.78	306.17	300.23	295.62	285.07
BPCL	353.80	367.25	360.70	357.25	354.15	350.70	347.60	341.05
CIPLA	507.10	524.88	515.93	511.52	506.98	502.57	498.03	489.08
COALINDIA	227.75	237.07	232.52	230.13	227.97	225.58	223.42	218.87
DRREDDY	2640.30	2735.18	2680.13	2660.22	2625.08	2605.17	2570.03	2514.98
EICHERMOT	20023.60	20991.20	20541.20	20282.40	20091.20	19832.40	19641.20	19191.20
GAIL	332.90	353.22	342.27	337.58	331.32	326.63	320.37	309.42
GRASIM	804.35	830.75	818.25	811.30	805.75	798.80	793.25	780.75
HCLTECH	940.75	1002.53	974.98	957.87	947.43	930.32	919.88	892.33
HDFC	1979.40	2050.65	2017.00	1998.20	1983.35	1964.55	1949.70	1916.05
HDFCBANK	2135.85	2172.73	2154.98	2145.42	2137.23	2127.67	2119.48	2101.73
HEROMOTOCO	2824.90	2985.80	2893.30	2859.10	2800.80	2766.60	2708.30	2615.80
HINDALCO	203.55	214.33	208.98	206.27	203.63	200.92	198.28	192.93
HINDPETRO	242.00	251.47	246.37	244.18	241.27	239.08	236.17	231.07
HINDUNILVR	1750.20	1776.32	1762.57	1756.38	1748.82	1742.63	1735.07	1721.32
IBULHSGFIN	797.35	860.42	830.72	814.03	801.02	784.33	771.32	741.62
ICICIBANK	369.05	382.02	375.62	372.33	369.22	365.93	362.82	356.42
INDUSINDBK	1501.60	1556.67	1525.47	1513.53	1494.27	1482.33	1463.07	1431.87
INFRATEL	277.65	290.02	283.82	280.73	277.62	274.53	271.42	265.22
INFY	745.35	772.78	757.78	751.57	742.78	736.57	727.78	712.78
IOC	135.95	140.10	138.15	137.05	136.20	135.10	134.25	132.30
ITC	289.75	300.33	294.48	292.12	288.63	286.27	282.78	276.93
JSWSTEEL	278.00	299.15	289.10	283.55	279.05	273.50	269.00	258.95
KOTAKBANK	1291.75	1360.63	1325.78	1308.77	1290.93	1273.92	1256.08	1221.23
LT	1301.15	1353.72	1330.32	1315.73	1306.92	1292.33	1283.52	1260.12
M&M	708.50	758.88	736.33	722.42	713.78	699.87	691.23	668.68
MARUTI	7068.85	7352.12	7226.62	7147.73	7101.12	7022.23	6975.62	6850.12
NTPC	142.80	146.70	144.80	143.80	142.90	141.90	141.00	139.10
ONGC	144.35	148.70	146.75	145.55	144.80	143.60	142.85	140.90
POWERGRID	189.70	195.32	192.57	191.13	189.82	188.38	187.07	184.32
RELIANCE	1235.15	1288.60	1261.25	1248.20	1233.90	1220.85	1206.55	1179.20
SBIN	290.25	300.08	295.28	292.77	290.48	287.97	285.68	280.88
SUNPHARMA	418.95	445.48	431.38	425.17	417.28	411.07	403.18	389.08
TATAMOTORS	180.85	190.53	184.98	182.92	179.43	177.37	173.88	168.33
TATASTEEL	33.30	41.75	38.10	35.70	34.45	32.05	30.80	27.15
TCS	1901.90	1959.88	1931.63	1916.77	1903.38	1888.52	1875.13	1846.88
TECHM	714.20	748.40	730.20	722.20	712.00	704.00	693.80	675.60
TITAN	982.65	1031.32	1003.62	993.13	975.92	965.43	948.22	920.52
ULTRACEMCO	3860.50	4021.67	3935.57	3898.03	3849.47	3811.93	3763.37	3677.27
UPL	763.30	800.13	781.53	772.42	762.93	753.82	744.33	725.73
VEDL	191.50	206.33	199.83	195.67	193.33	189.17	186.83	180.33
WIPRO	346.50	371.23	357.63	352.07	344.03	338.47	330.43	316.83
YESBANK	192.20	203.93	197.53	194.87	191.13	188.47	184.73	178.33
ZEEL	425.25	462.23	444.88	435.07	427.53	417.72	410.18	392.83

Mutual Fund Recommendations	
Equity	ELSS (Tax Saving)
AdityaBirla Sun Life Frontline Equity Fund	Axis Long Term Equity Fund
ICICI Prudential Bluechip Fund	Franklin India Tax shield
ICICI Prudential Value Discovery Fund	
L&T Value Fund	
HDFC Small Cap Fund	

Disclaimer: This Document is for private circulation and for information purposes only. It does not have regard to the specific investment objectives, financial situation and the particular needs of any specific person who may receive this report. Investors should seek financial advice regarding the appropriateness of investing in any securities or investment strategies discussed or recommended in this report and should understand that statements regarding future prospects may not be realized. In no circumstances it be used or considered as an offer to sell or a solicitation of any offer to buy or sell the Securities mentioned in it. Please note that Capstocks, its directors and associates may have trading or investment positions in the securities mentioned herein
 |